

ALIGN SERIES **CHORUS**



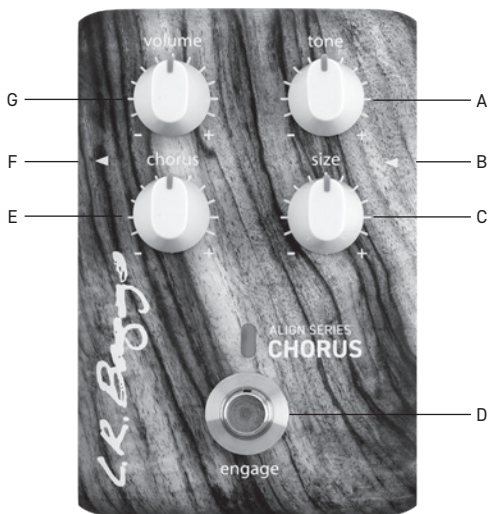
USER'S GUIDE

INTRODUCTION

In the same way a choir enhances the foundation of a melody, the Align Chorus complements your acoustic guitar rather than placing the effect in the limelight. With the purity of LR Baggs' circuitry and the effect in side chain, the Chorus adds fullness behind your guitar without any signal degradation. We designed the pedal with simple and intuitive controls that help you dial in a pleasing effect quickly and easily.

GETTING STARTED

1. Power the Chorus with a 9V power supply or a 9V battery.
2. Plug your instrument into the input to activate the Chorus (upper **right hand** side) and a cable into the $\frac{1}{4}$ " output (upper **left hand** side).
3. Start with the volume control at noon. This should match the engaged signal with the bypassed signal.
4. Plug the $\frac{1}{4}$ " cable into your amp, PA, or next pedal in the signal chain and experiment with the Chorus.



TOP FEATURES

A. TONE

This is a simple control to help you alter the tone of the chorus itself. It will not affect the tone of your instrument, only the tone of the chorus. Turn the control clockwise for a bright, radiant sound or counterclockwise for a subtle, smooth chorus tone.

B. INSTRUMENT INPUT

The ¼" input is an unbalanced (mono), all-discrete input. Plugging into the input will activate the Chorus, therefore, unplugging will turn the system off.

C. SIZE

This size control blends between two chorus voicings that interact with one another. It's essentially like adding more instruments as you increase the size. Turn counter clockwise for a small chorus. Turn clockwise for a large chorus.

D. ENGAGE

Press the footswitch to engage the effects. When the light is on, all of the controls on the Chorus are engaged. When the light is off, the whole pedal is true bypassed.

E. CHORUS

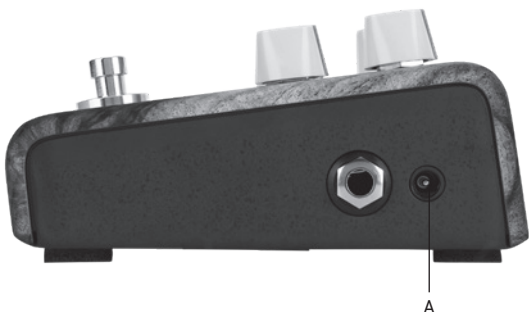
The chorus control blends an affected chorus signal with an unaffected instrument signal. When turned fully counterclockwise, no chorus will affect the signal. Turn clockwise to add chorus.

F. ¼" OUT

The ¼" output is an unbalanced, line level output. You can plug into any amp or device that has a ¼" input. We recommend running into any other LR Baggs Align pedals, DI's, or the Synapse Personal PA System.

G. VOLUME

The master volume will help you find a balance between your engaged and bypassed signal. It is only active when the engage light is on. Keep in mind that the level of the chorus control can affect this balance, so you may need to adjust the volume as you adjust the effect.



SIDE FEATURES

A. DC INPUT

The DC power input is designed for a standard 2mm plug commonly used with effects pedals and “floorbox” products. Most power supplies or multi-power devices designed for musical products may be used. 9VDC recommended with a 12VDC maximum. Plugging in a power supply will activate the Chorus.

SPECIFICATIONS

1/4" INPUT

Input Impedance: 2.2 Megohms

Preamp Gain: +6dB

Input Level: -25dBv to +4.2dBv (0.056Vrms to 1.626Vrms)

LINE OUTPUT

Output Level: +6.5dBv (2.121Vrms) Un-Balanced

Output Impedance: 220 Ohms

POWER

DC Power Consumption: 450mW Max at 9V

DC Current Draw: 48mA

Voltage Range: 7.5VDC – 12VDC

Power Supply: 9VDC with 100mA minimum

***IMPORTANT:** polarity Pos (+) on outside, Gnd (-) on center

9V Battery Life: 11 hours

Signal to Noise: 90dB, Unweighted

PHYSICAL CHARACTERISTICS

0.85 Lbs, 5" Length x 3.25" Width x 2" Depth

These specifications may change without notice.

This device complies with part 15 of the FCC Rules.

Operation is subject to the following two conditions:

- (1) This device may not cause harmful interference, and*
- (2) this device must accept any interference received, including interference that may cause undesired operation.*

PRODUCT REGISTRATION & WARRANTY INFORMATION

PRODUCT REGISTRATION

Register the Align Chorus online at:

lrbaggs.com/register

LIMITED WARRANTY

L.R. Baggs warrants to the using purchaser that this product shall be free of defects in workmanship and materials under normal and proper use for a period of one year. If you experience problems with the Align Chorus, please contact your dealer.

To learn more about this product, please visit:

lrbaggs.com/align



L.R. Baggs

483 N. Frontage Road, Nipomo, CA 93444

ph: 805.929.3545

lrbaggs.com